



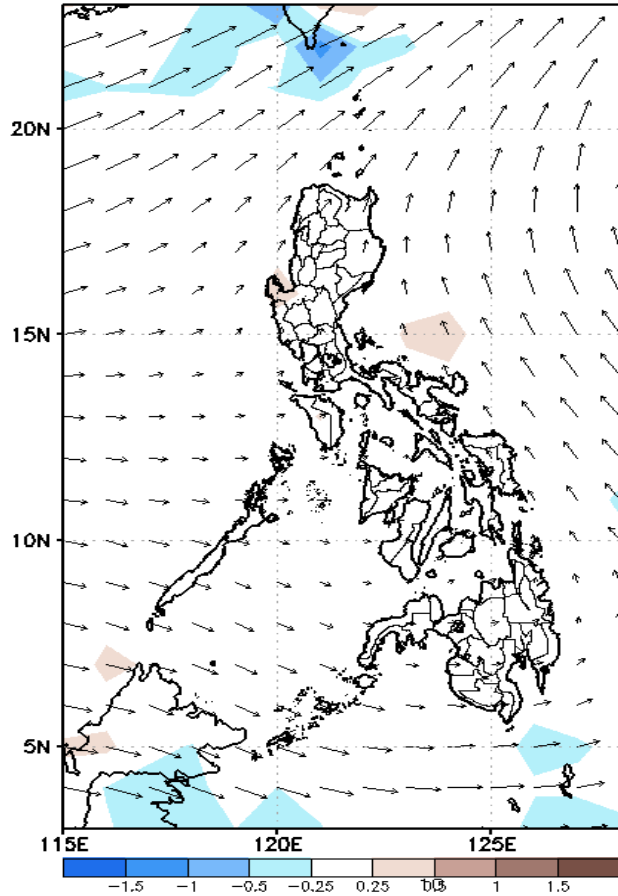
Week 1 & Week 2 Forecast for the Philippines using GEFS Model



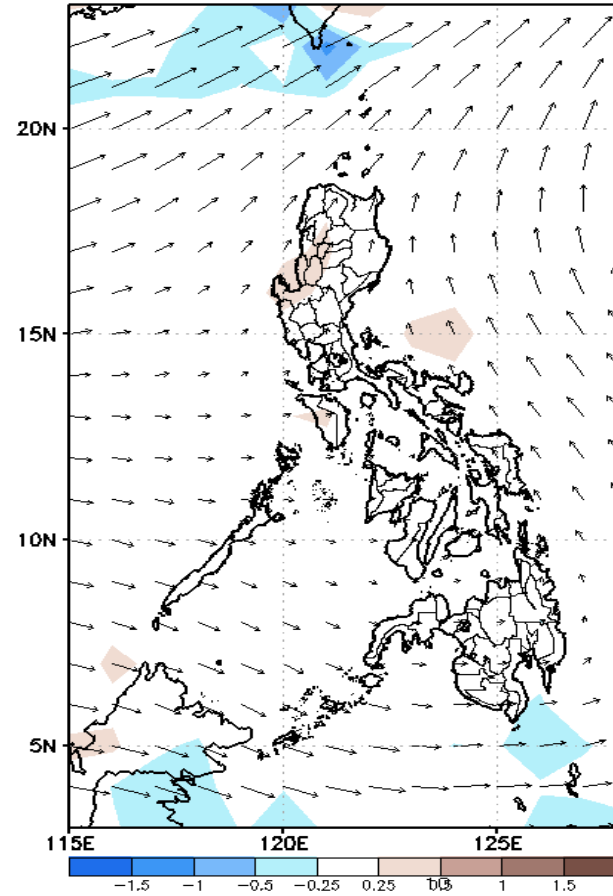
GEFS Week-1 Forecasts: Divergence & Wind Anomaly

Week 1: May 11-17, 2022

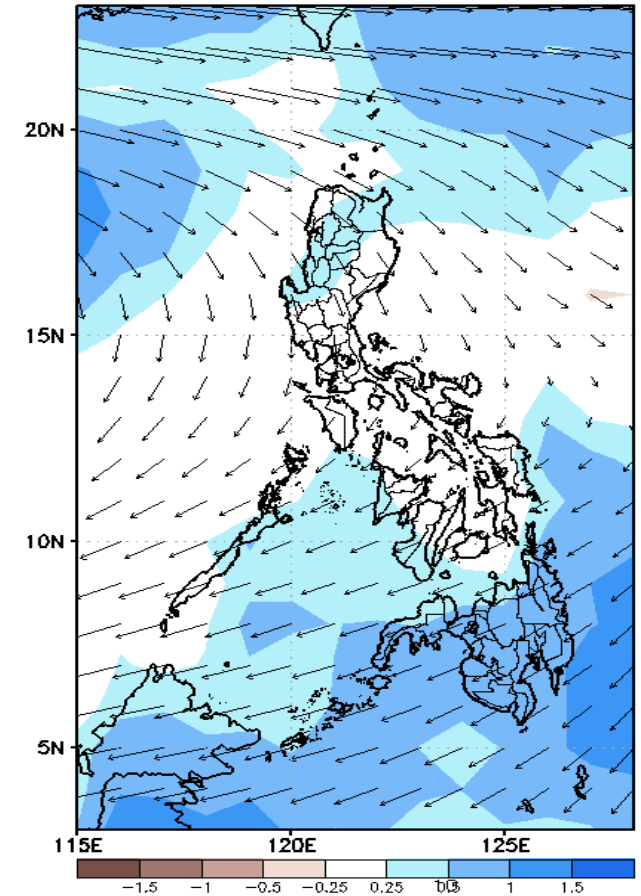
GEFS Week-1 850-hPa Divergence and Wind Anomaly
Valid: 20220511 - 20220517



GEFS Week-1 700-hPa Divergence and Wind Anomaly
Valid: 20220511 - 20220517



GEFS Week-1 200-hPa Divergence and Wind Anomaly
Valid: 20220511 - 20220517

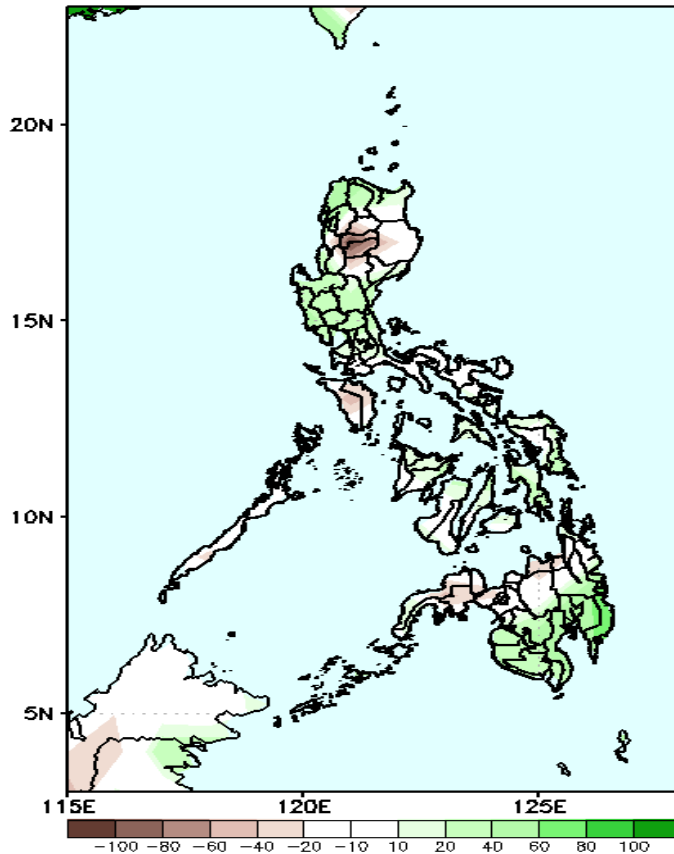


Upper and low level Divergence suggest a likelihood of light precipitation in some areas of Northern Luzon, Western Visayas, Palawan and most parts of Mindanao. Easterlies affecting most parts of the country attributing to warmer temperatures during the forecast period.

Precipitation Anomaly and Exceedance Probability > 25/50 mm

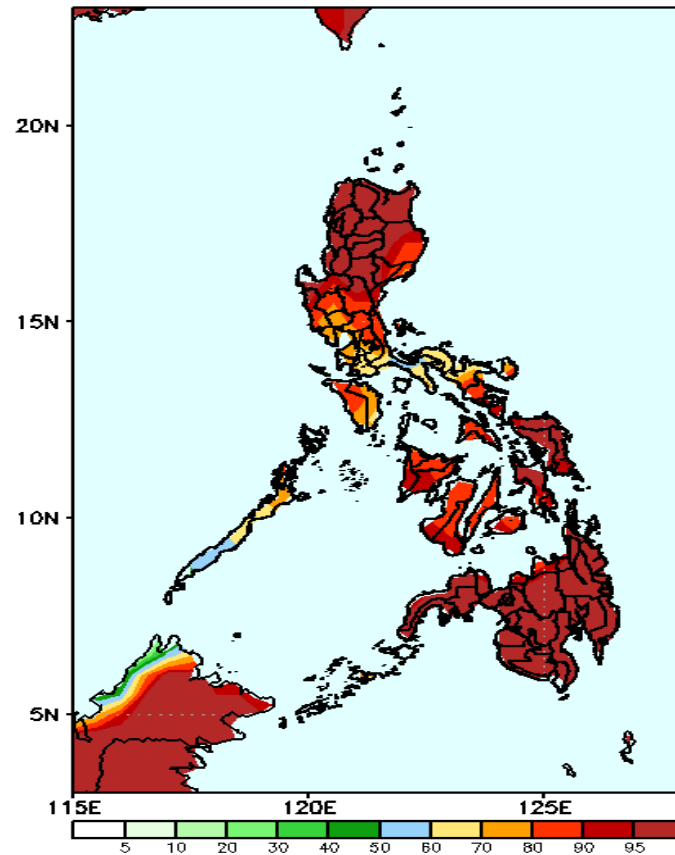
Week 1: May 11-17, 2022

GEFS Week-1 Precip Anomaly
Valid: 20220511 - 20220517



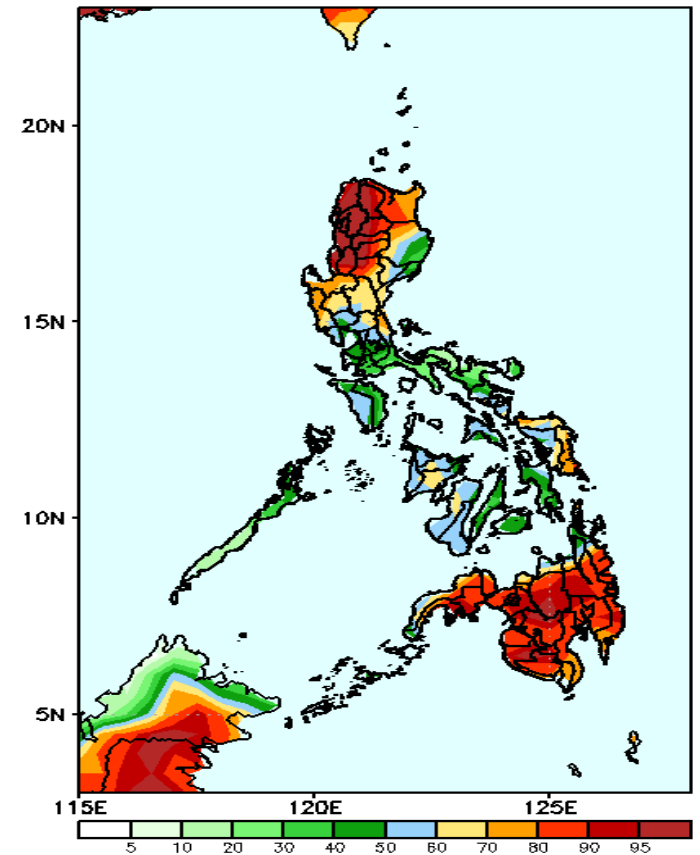
Rainfall deficit of up to 90mm in Mt. Province and Ifugao, 20-60mm in Mindoro and Northern Mindanao while increase of rainfall of 40-90mm for the rest of Luzon and southern Mindanao during the forecast period.

GEFS Week-1 Exceedance Prob. > 25mm
Valid: 20220511 - 20220517



High probability of rainfall to exceed 25mm in most parts of the country during the forecast period.

GEFS Week-1 Exceedance Prob. > 50mm
Valid: 20220511 - 20220517

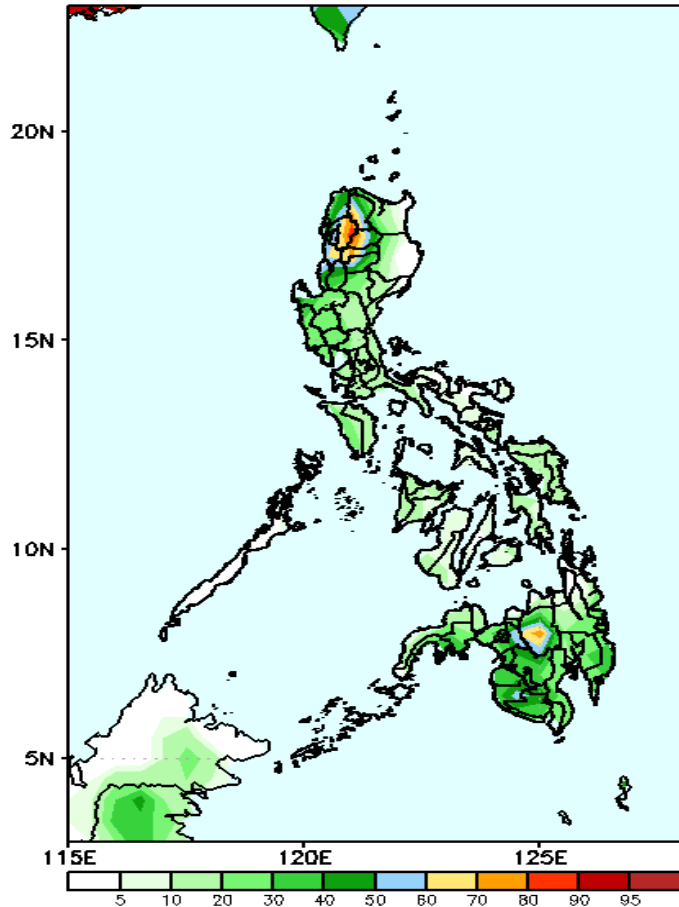


High probability of rainfall to exceed 50mm in most parts of Northern & Central Luzon, Samar Provinces and most parts of Mindanao while less likely for the rest of the county during the forecast period.

Exceedance Probability > 100/150/200 mm

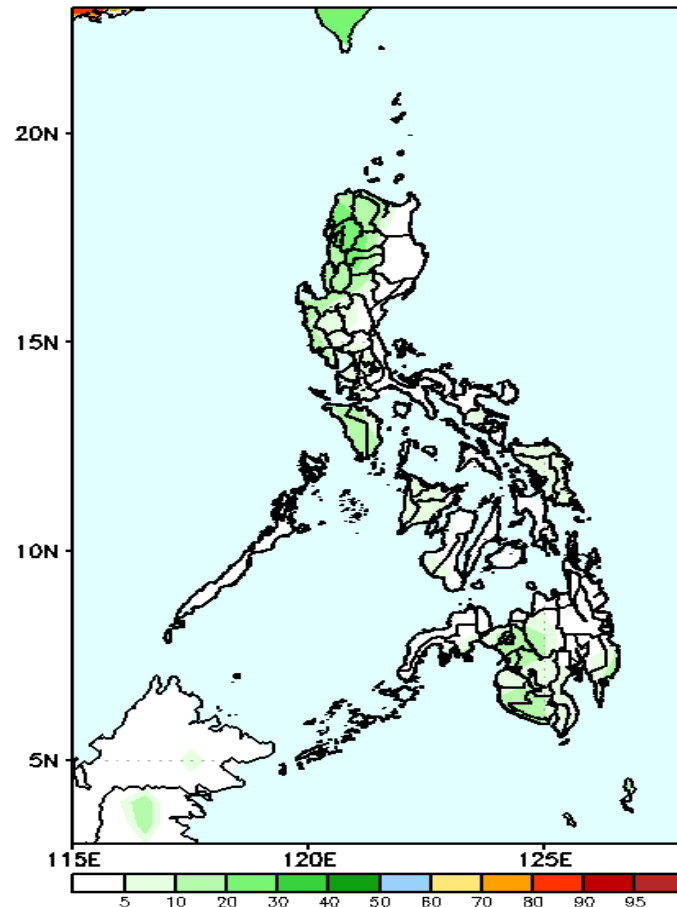
Week 1: May 11-17, 2022

GEFS Week-1 Exceedance Prob. > 100mm
Valid: 20220511 - 20220517



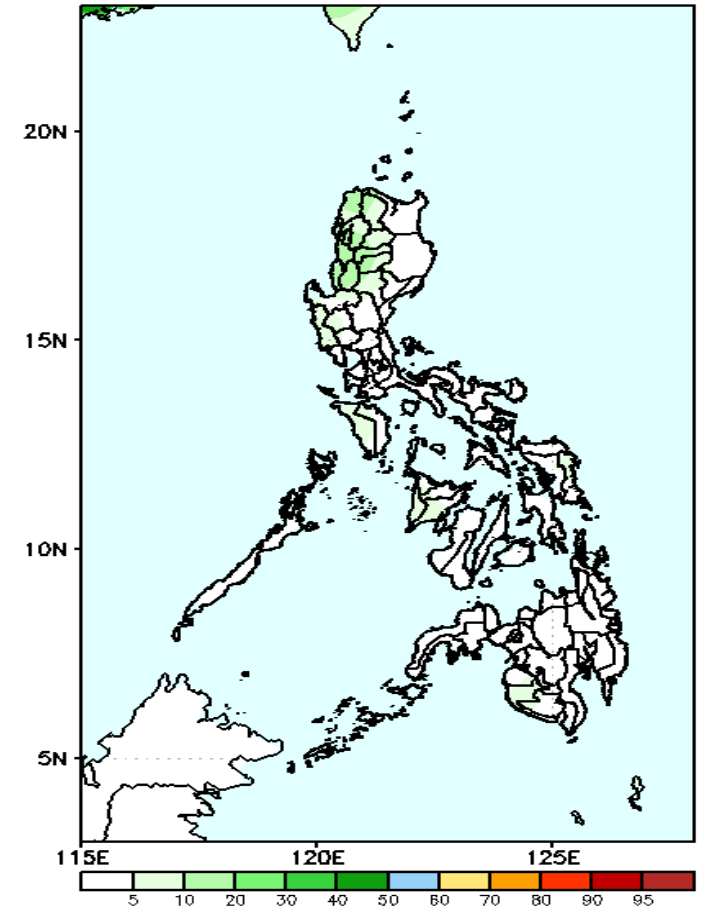
70-90% probability of rainfall to exceed 100mm in Abra, Kalinga, Mt. Province, Ifugao and Bukidnon while less likely for the rest of the country during the forecast period.

GEFS Week-1 Exceedance Prob. > 150mm
Valid: 20220511 - 20220517



Low probability of rainfall to exceed 150mm in most parts of the country during the forecast period.

GEFS Week-1 Exceedance Prob. > 200mm
Valid: 20220511 - 20220517



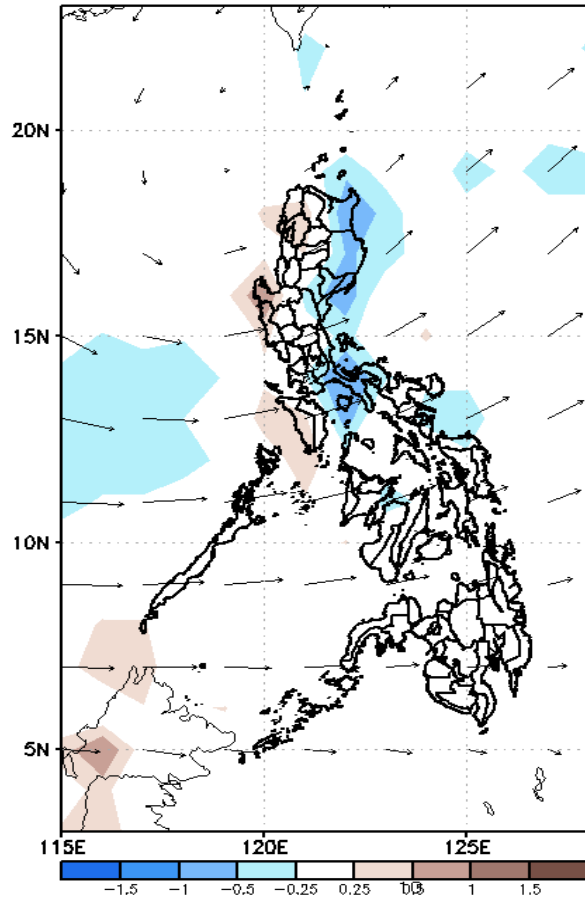
Low probability of rainfall to exceed 200mm in most parts of the country during the forecast period.



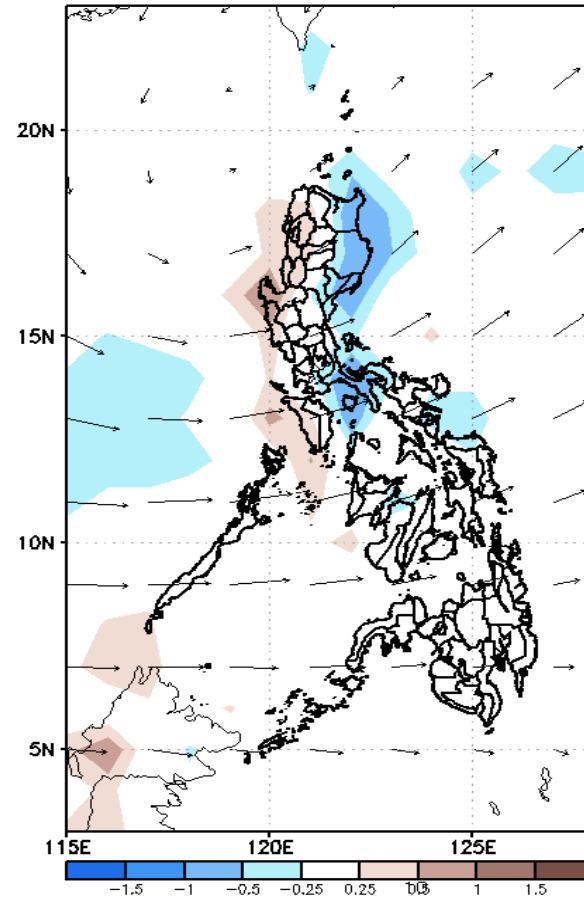
GEFS Week-2 Forecasts: Divergence & Wind Anomaly

Week 2: May 18-24, 2022

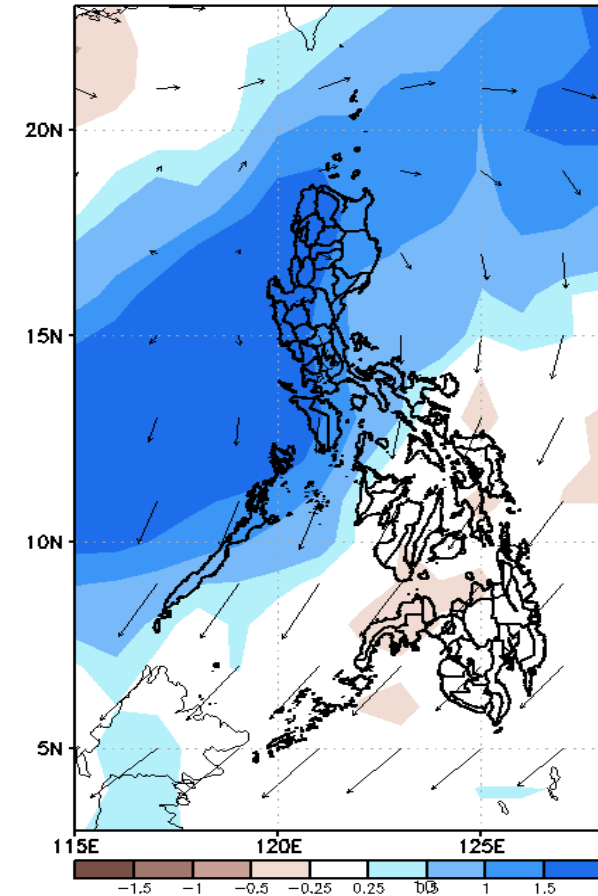
GEFS Week-2 850-hPa Divergence and Wind Anom
Valid: 20220518 - 20220524



GEFS Week-2 700-hPa Divergence and Wind Anom
Valid: 20220518 - 20220524



GEFS week-2 200-hPa Divergence and Wind Anom
Valid: 20220518 - 20220524

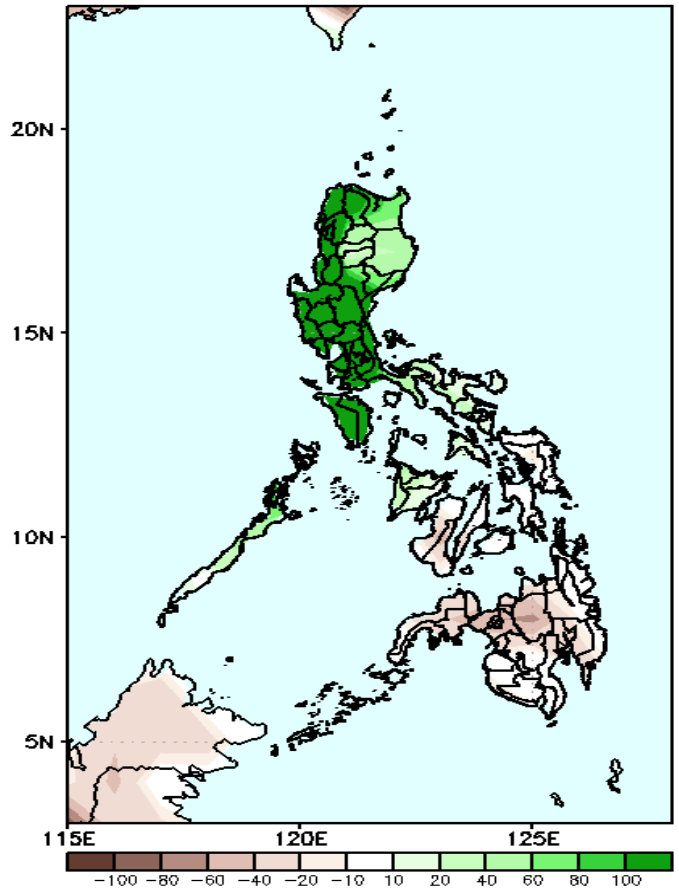


Upper and low level Divergence suggest a likelihood of light precipitation in most parts of Luzon and some parts of Western Visayas. Southwest windflow affecting the western sections of Luzon and Visayas while Easterlies affecting most parts of the country attributing to warmer temperatures during the forecast period.

Precipitation Anomaly and Exceedance Probability > 25/50 mm

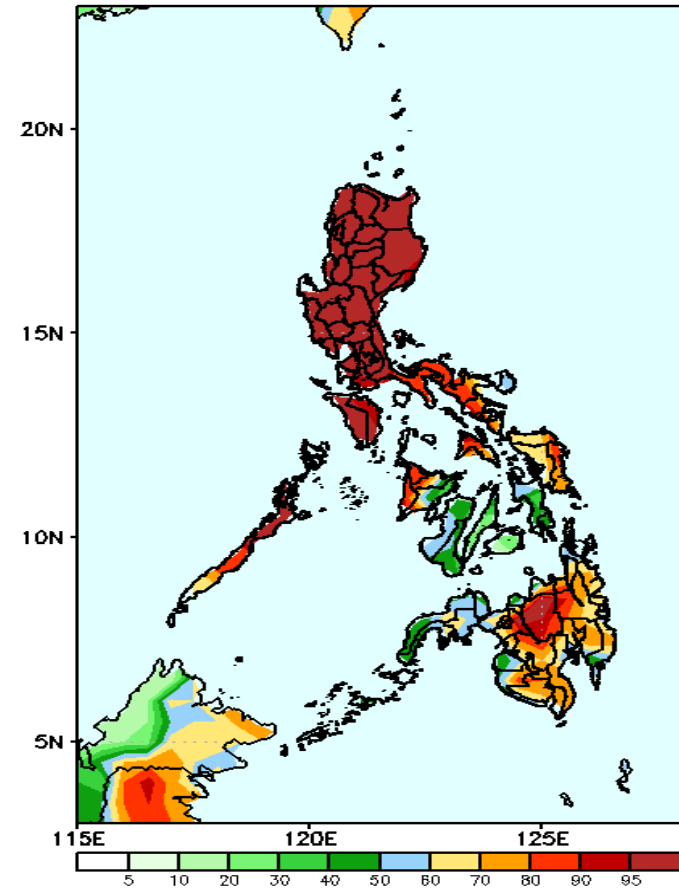
Week 2: May 18-24, 2022

GEFS Week-2 Precip Anomaly
Valid: 20220518 - 20220524



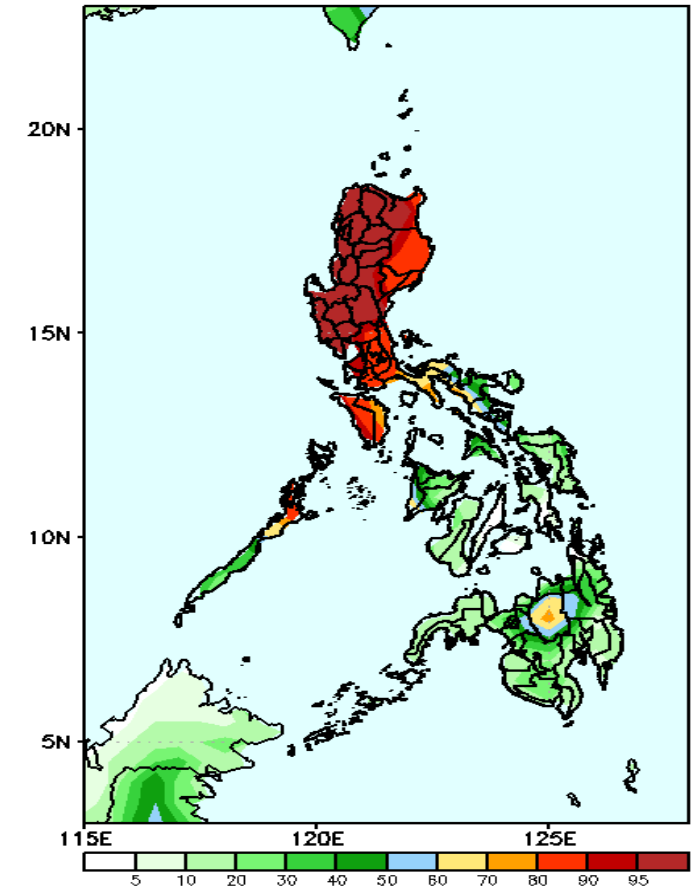
Increase of rainfall of more than 100mm in most parts of Luzon while rainfall deficit of 20-60mm in most parts of Visayas and Mindanao during the forecast period.

GEFS Week-2 Exceedance Prob. > 25mm
Valid: 20220518 - 20220524



High probability of rainfall to exceed 25mm in most parts of the country except in Leyte provinces, Central Visayas and Zamboanga del Norte during the forecast period.

GEFS Week-2 Exceedance Prob. > 50mm
Valid: 20220518 - 20220524

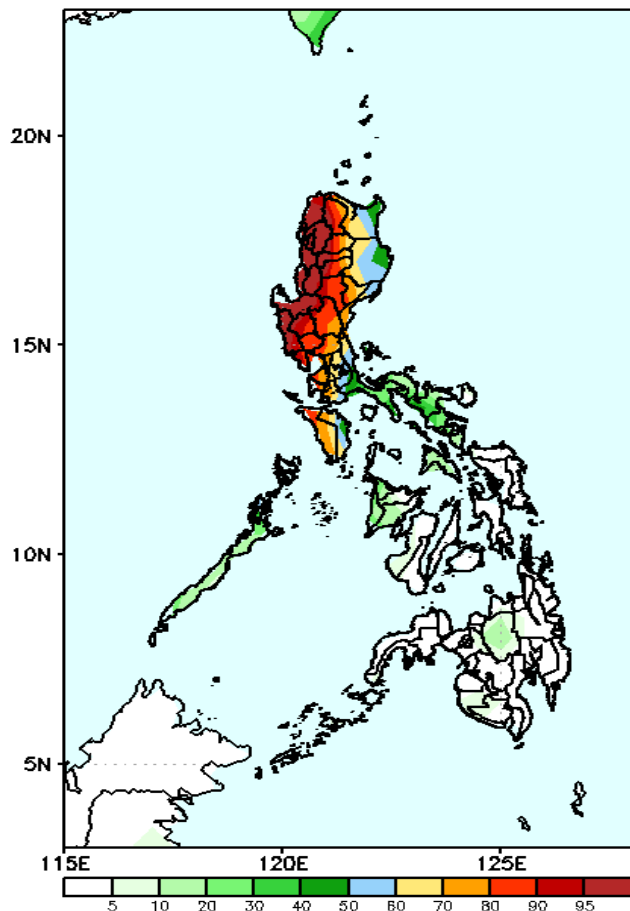


High probability of rainfall to exceed 50mm in most parts of Luzon and Bukidnon while less likely in Visayas and Mindanao during the forecast period

Exceedance Probability > 100/150/200 mm

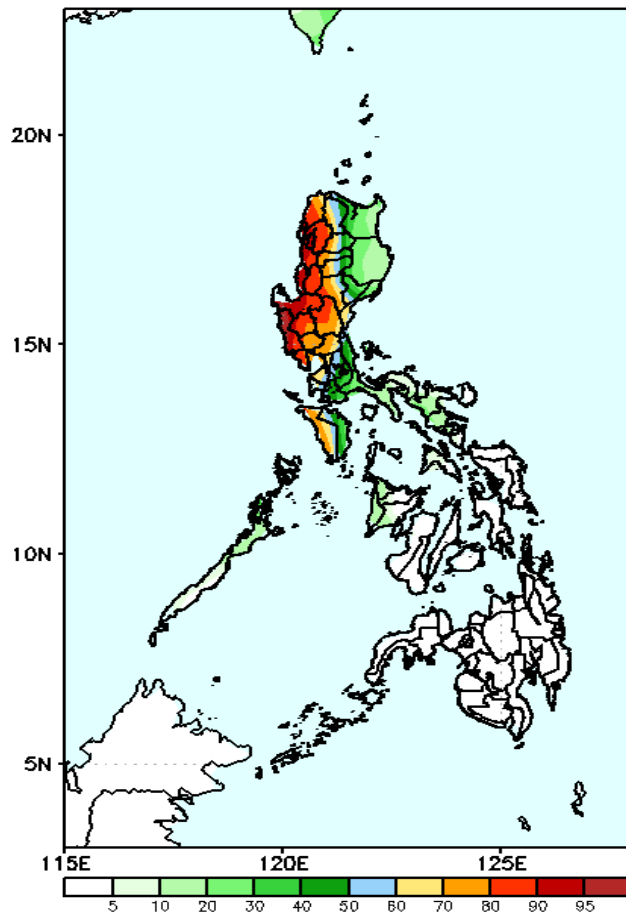
Week 2: May 18-24, 2022

GEFS Week-2 Exceedance Prob. > 100mm
Valid: 20220518 - 20220524



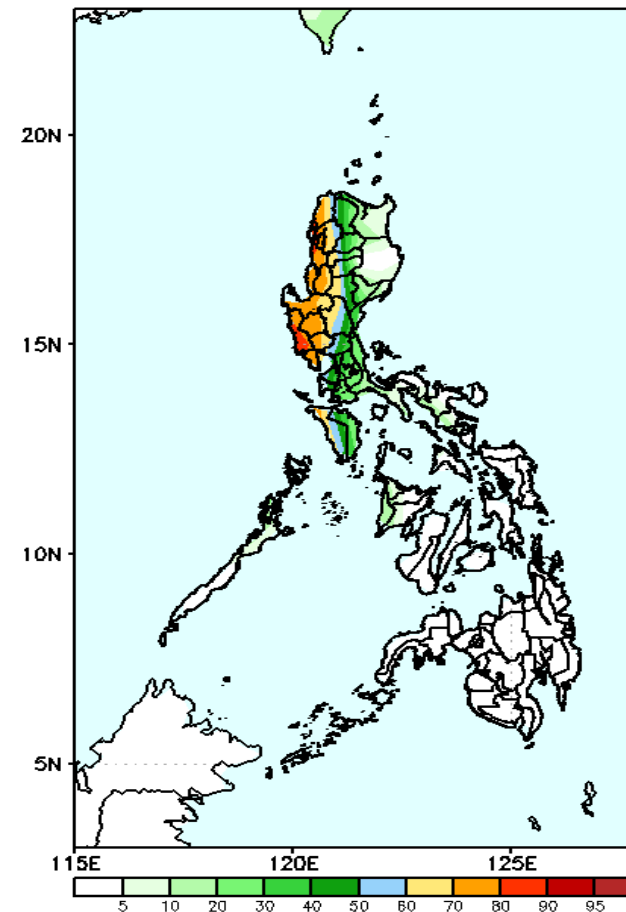
High probability of rainfall to exceed 50mm in most parts of Luzon while less likely in Visayas and Mindanao during the forecast period.

GEFS Week-2 Exceedance Prob. > 150mm
Valid: 20220518 - 20220524



High probability of rainfall to exceed 150mm in most parts of western and central Luzon while less likely in Visayas and Mindanao during the forecast period.

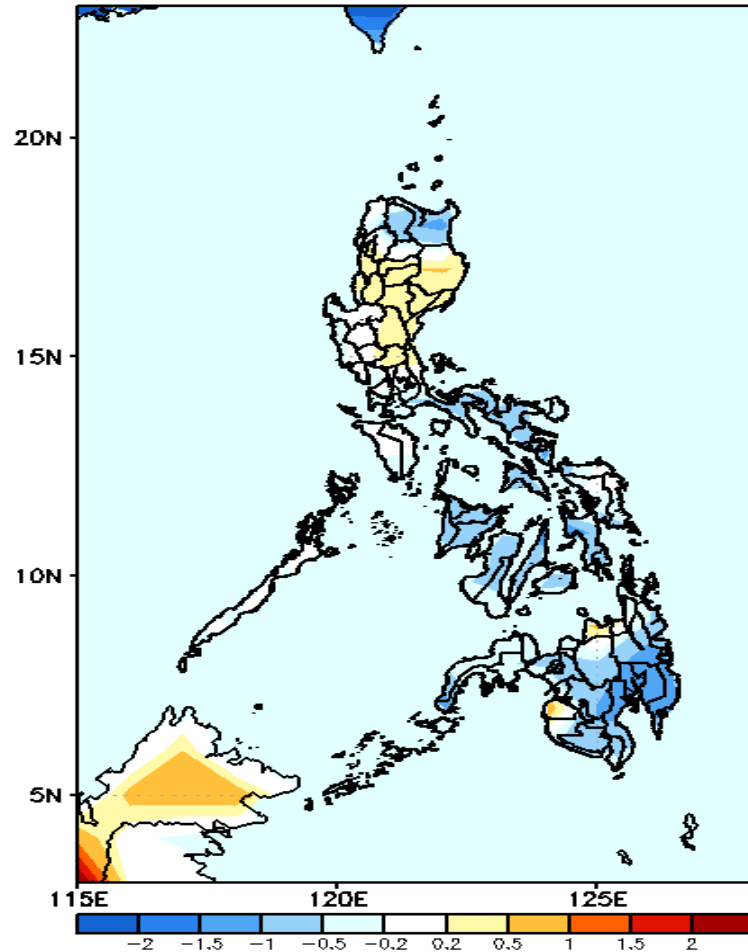
GEFS Week-2 Exceedance Prob. > 200mm
Valid: 20220518 - 20220524



Low probability of rainfall to exceed 200mm in most parts of the country except in western Luzon where there is 50-85% chance during the forecast period.

GEFS Week-1 & 2 Forecasts: T2m Anomaly

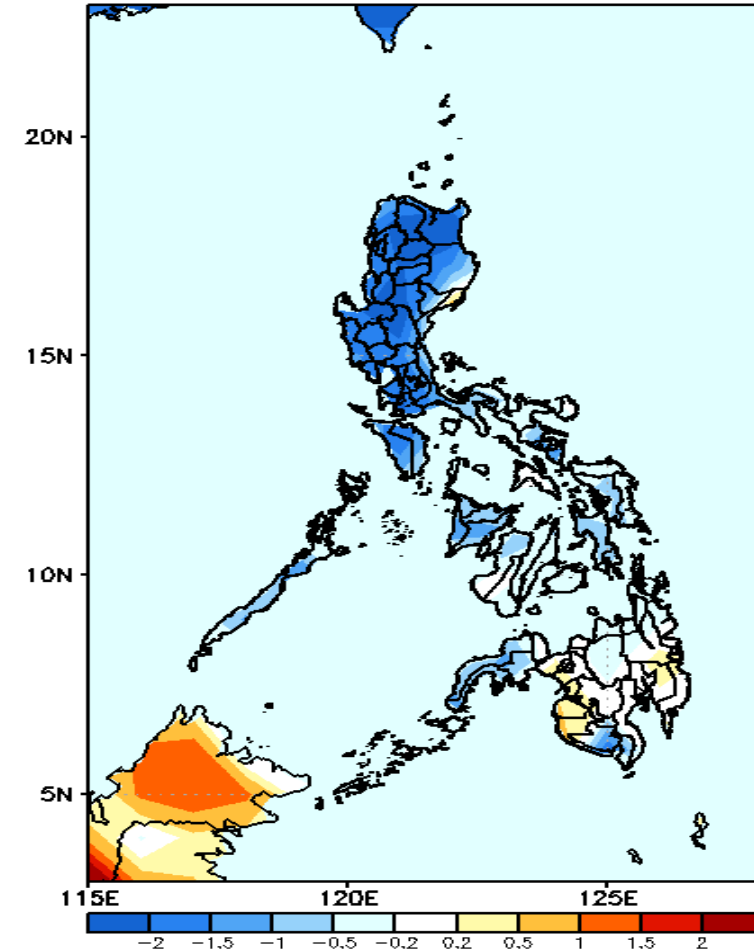
GEFS Week-1 T2m Anomaly
Valid: 20220511 - 20220517



2m Temperature Week 1: May 11-17, 2022

Slightly cooler to cooler than average surface air temperature will likely experience in Apayao, Cagayan, Quezon, most parts of Bicol Region, Visayas and Mindanao while average to slightly warmer temperature the rest of Luzon, Misamis Oriental and Maguindanao during the forecast period.

GEFS Week-2 T2m Anomaly
Valid: 20220518 - 20220524



2m Temperature Week 2: May 18-24, 2022

Cooler than average surface air temperature will likely experience in most parts of Luzon, Panay Island and Maguindanao while average to slightly cooler for the rest of the country during the forecast period.

